



The PARISH CHURCH *of*
ST. GILES
WEST BRIDGFORD

THE MUSIC AND ORGANS

by

Canon R. F. Wilkinson, M.A., F.S.A.

1951

ST. GILES' CHURCH,
WEST BRIDGFORD,

February, 1951.

DEAR FRIENDS,

In the leaflet enclosed with this letter I have written an account of the music during the last two hundred years in the Parish Church, where many generations have sung to the Glory of God. I hope that you may be interested in reading it.

It is perhaps appropriate that in the Festival of Britain Year, we should endeavour to place in our Church an organ, which will, when completed, be the third largest and one of the finest in the County of Nottinghamshire. It will have forty speaking stops and will contain all the old organ with many additions.

Our Church is used on many public occasions and we often welcome members of other Churches. We are glad that this should be so, and feel that we can appeal to all who live in the parish, a much wider circle than those who normally worship in the church. Three years ago we obtained an estimate, and prices have risen very much since then. Organs, like motor cars and all materials used in them are very scarce, and our church has already been on the firm's waiting list for two years. Now we have given the order for rebuilding (£4,100) and if we receive enough in the next two months, we hope to complete the whole scheme, including the new Choir organ which will become still more expensive if we delay.

Many of you subscribed to the Jubilee Fund two years ago, and we do not forget your generosity then. We should be very grateful if you could send or promise a donation now. The organ will be completed about August, and final payment made in September.

Yours sincerely,

R. F. WILKINSON,

Rector.

GIFT DAY—Wednesday, March 7th in the Church 8 a.m. — 8 p.m.

Envelopes will be collected again if more convenient to you.

WHAT WE HAVE	ESTIMATE OF COST	WHAT WE HOPE FOR	
Bonds £1,000	Great, Swell and Pedal	5	Donations of £100
Working Party £1,000	Organs (Rebuilt and en-	10	" " £50
Legacy £500	larged) ... £4,100	20	" " £25
Promises £500	Third Manual £500	50	" " £10
	New Choir Organ with	100	" " £5
	12 stops ... £1,700	200	" " £2
		200	" " £1
		400	" " 10/-
			£3,300

The Parish Church of St. Giles WEST BRIDGFORD NOTTINGHAM



ST. GILES

Music has been associated with worship from the earliest times, and we read in the Bible of the trumpet, harp, flute and all kinds of music.

In mediæval days organs were to be found in the Cathedrals and Abbeys, though they were not very large and were usually placed on the top of the stone screens dividing the nave from the choir.

We know that in 1547 there was an organ in Melton Mowbray Church, and the organist received 6/8d. a year! In 1531, at Newark, we find a priest with "sufficient cunning and learning" to teach "plain song, descant, and to play at the organs."

In West Bridgford Church there may have been a small organ in the old loft, which formerly stood above the rood screen, and was unfortunately removed early in the last century.

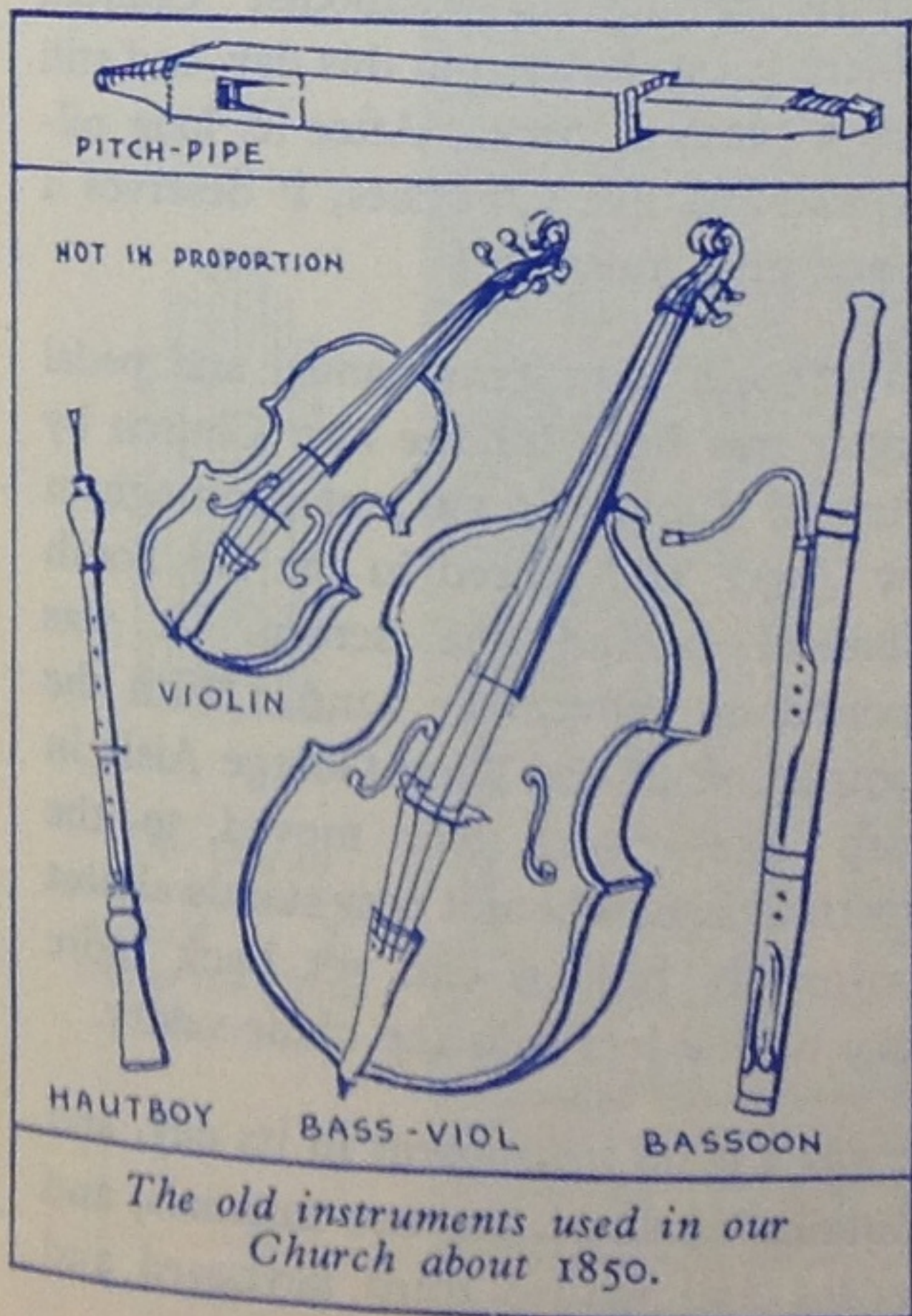
All these early organs were destroyed after the Reformation, and for the next century there was practically no music in parish churches except the singing of the psalms in verse.

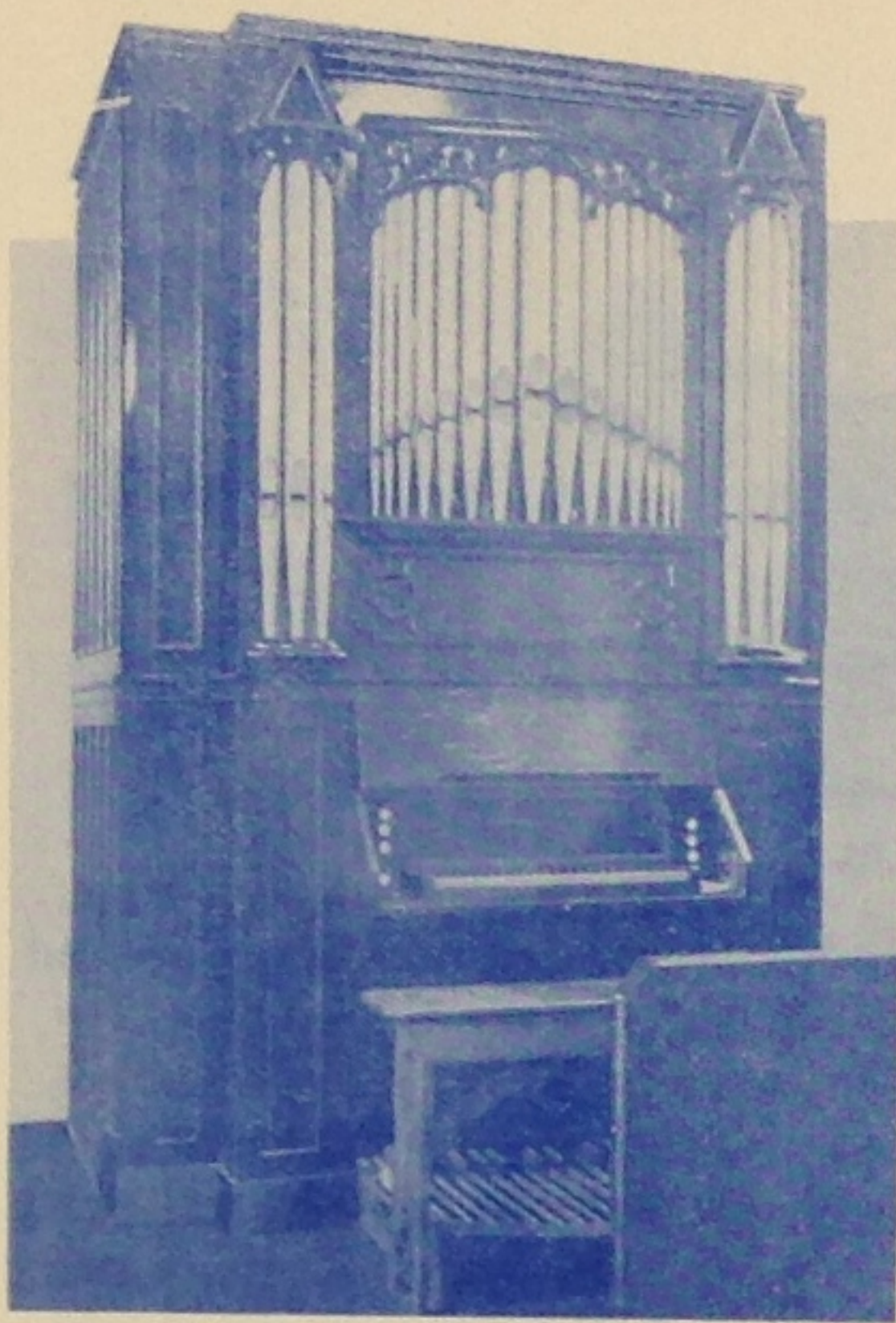
In the 18th century the revival of hymn singing brought the pitch pipe and the orchestra into the Churches.

The former was a small organ pipe with a movable stopper, by which the parish clerk gave out the proper note to start the singing. A specimen can be seen in the vestry at Holme Pierrepont.

The orchestra usually had four instruments and it began to appear in almost every Church about 1770, and remained until 1850 or a few years later. They played in a gallery at the west end of the Church.

In our Church there was a violin, oboe, bassoon and double bass, and in the churchwardens' accounts are numerous small payments for strings and reeds.





The old organ of 1871.

The orchestral players did not always attend regularly and sometimes had disputes amongst themselves. Owing to this difficulty, the clergy in many villages about this time placed barrel organs in their Churches. These were real organs, but required no organist, as the hymns



A rare photograph shewing the organ position in 1898.

and chants were played by turning a handle. There were usually about ten tunes for each.

In 1807, a singing loft was erected in the tower for £22, and a mixed choir occupied it for many years.

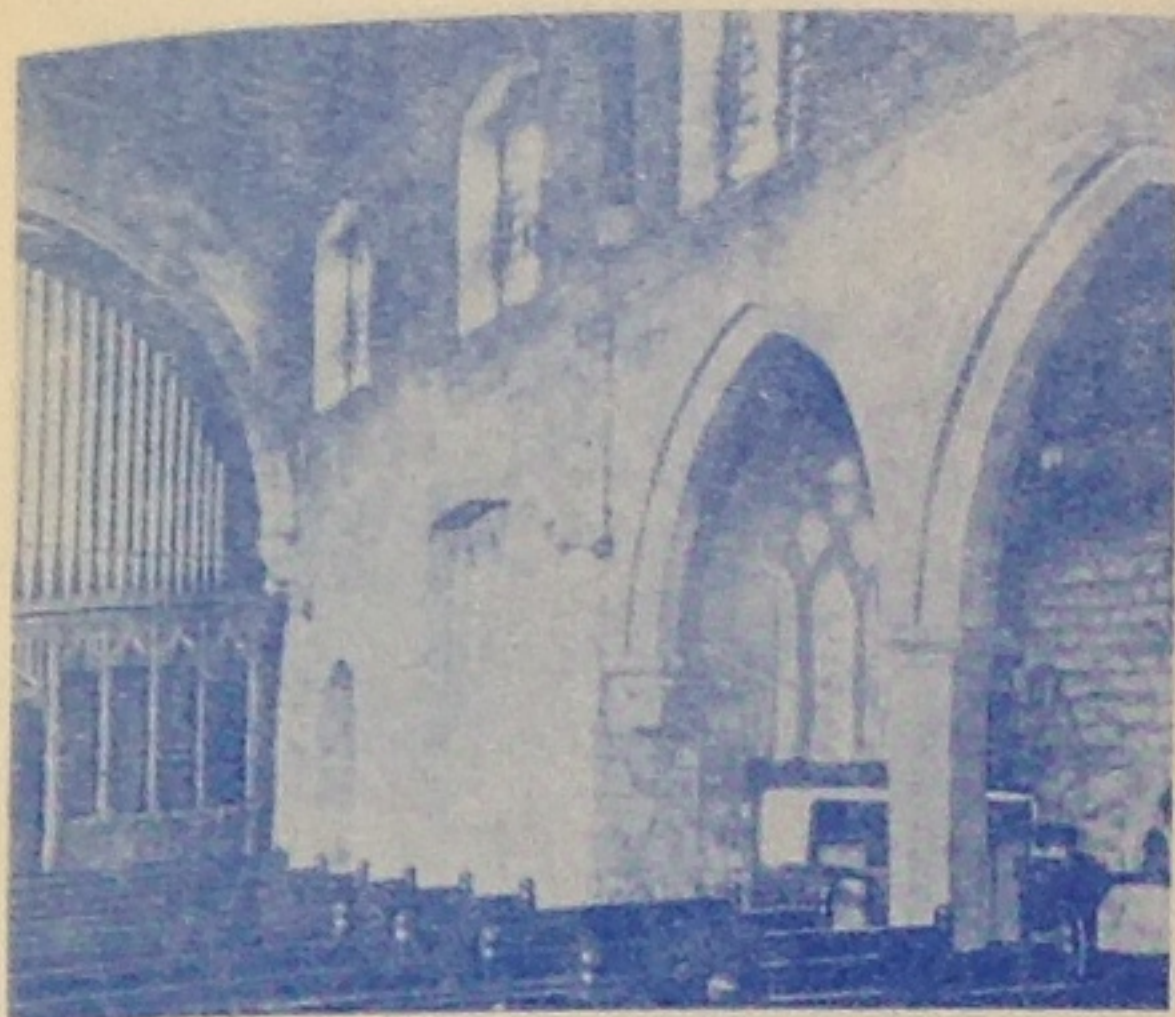
In 1871 the Church was restored and a vestry erected on the north side (as shewn in the small sketch of the old Church on the first page). In this vestry was placed a small organ formerly used in Sneinton Church.

At the opening service we read that Mr. Gunn "caused it to be heard to advantage," and "it was a sweet toned instrument." This organ has quite a long history. It was bought for Sneinton about 1840, and was sold to West Bridgford in 1871 for £44.

When the Church was enlarged in 1898, it was given to Lady Bay Church, where it remained until 1903, when it was sold for £15 to Cotgrave Methodist Chapel. A few years ago the Chapel was closed and the organ was eventually moved to Trent Boulevard Methodist Church, where it can be seen to this day, and still has a pleasant tone. After its long pilgrimage to five Churches, it deserves a place in a museum!

In 1899, a large two-manual and pedal organ was built for the new Church by Messrs. Lloyd & Co., of Nottingham for £300, and placed in the old South Chancel behind the screen. It was opened on November 22nd. With the completion of the King George Aisle, in 1919 the organ was moved to the North Chapel where it now stands almost completely hidden and set back more than twelve feet into the choir vestry.

It was a good instrument in its day, and contains 23 stops, for two manuals, and pedals, and with a third keyboard and



The Organ of 1898 in the South Chancel.

provision for six stops for a Choir Organ, which has never been completed and has no pipes.

After 52 years' continuous use, and by no means improved by four floods, it needs completely re-building.

For some years, the maintenance and tuning of the organ has been in the hands of Messrs. Henry Willis & Sons, Ltd., of London, the well-known builders of many Cathedral organs, including Canterbury and Liverpool.

They are prepared to re-build the organ and so alter the position that it will be heard to much better advantage without spoiling any view of the Church. The new instrument will consist of three manuals and pedals with forty speaking stops and electric action.

The new console will be placed in the best possible position for an organist in the arch behind the Rector's stall.

The total amount required may seem a great deal of money, but costs are very high and will almost certainly increase.

This is a great opportunity to acquire a fine instrument, as the new choir organ of nine speaking stops is offered to us for a limited period at a greatly reduced price. An organ of this size, if entirely new to-day would cost over £10,000.

If we can raise the money still required in the next three months we shall have one of the finest organs in Nottinghamshire, which will add greatly to our worship every Sunday and inspire all who hear its music on special occasions.



The Organ as it is to-day, erected 12-ft. inside the Choir Vestry.





The MAIN ORGAN

consisting of Great, Swell and most of the pedal organ completely re-built and brought forward 6ft. It is intended to separate the organ from the vestry by building a wall.

The NEW CHOIR ORGAN

This nine stop addition is to be placed over the screen and will be complete with its own three pedal stops.

The NEW CONSOLE

is the very latest all-electric "WILLIS" 3-manual with draw knobs for all speaking stops and tilting tablets for the couplers. It will be placed in the arch behind the rector's stall, but will not be seen by the congregation.



Reconstruction of the Organ by Messrs Henry Willis and Sons Ltd., London.

GREAT ORGAN

- 1—Bordun
- 2—Open Diapason 1
- 3—Open Diapason 2
- 4—Clarabella
- 5—Principal
- 6—Gemshorn
- 7—Flute
- 8—Twelfth
- 9—Fifteenth
- 10—Mixture
- 11—Tromba

CHOIR ORGAN

- 22—Open Diapason
- 23—Viola-da-Gamba
- 24—Rohr Flute
- 25—Dulciana
- 26—Flute
- 27—Nazard
- 28—Flautino
- 29—Tierce
- 30—Corno-di-Bassetto
(Enclosed)

SWELL ORGAN

- 12—Violin Diapason
- 13—Hohl Flute
- 14—Aeoline
- 15—Voix Celestes
- 16—Viola
- 17—Harmonic Flute
- 18—Cornet Mixture
- 19—Contra Oboe
- 20—Trumpet
- 21—Clarion

PEDAL ORGAN

- 31—Resultant Bass
- 32—Open Bass
- 33—Sub Bass
- 34—Octave Bass
- 35—Flute Bass
- 36—Oboe
- 37—Trombone
- 38—Gedackt 16
- 39—Gedackt 8
- 40—Gedackt 4

40 Stops, 18 Couplers, 39 Pistons, 2 Tremolos, 3 Crescendo Pedals.
Electric Action and Electric Blower.

I enclose £ : : towards the fund being
promise

raised for the Organ of the Parish Church, West Bridgford.
(If desired, payment may be made by instalments)

Receipt should be sent to :-

Mr., Mrs., Miss.....

.....

.....